



## Treatment Works • People Recover



# • 2021 ANNUAL REPORT •

Dear Stakeholder,

The entirety of FY2021 was marked by the impacts of the ongoing public health pandemic. However, the excellent response of our funded partner agencies enabled our community to continue to receive behavioral health services needed during these challenging times.

The greatest asset to our system is our relationships with other agencies and partners. This excellent collaboration with additional local organizations results in a joint focus that fills gaps throughout our community, providing vital programs and services. To name just a few of these important partnerships:

- With Health Departments for assessment and planning,
- With the Courts and law enforcement to enable mental health and addiction treatment in our jails, and specialized training for law enforcement professionals related to mental health,
- With our local school districts and education professionals to increase the breadth and depth of services we provide to the youth in our communities.

All this exemplifies our shared commitment to the mental health and substance use disorder services including prevention, treatment and recovery supports.

Your MHRB has continued to apply for funding to supplement our services and programs. Through a continuation of our State Opiate Response grant, the **MHRB received an additional \$832,000 to aid the substance use disorder services provided by four of our funded partner agencies. Many of our essential grants have continued - including funds used to continue jail services and peer supports, provisions for early childhood mental health pre-school consultations, and funding for our housing and peer support re-entry services for citizens returning from prison.** Additionally, during FY21 our MHRB used one-time increased state allocated funds of \$228,000 to bolster **K – 12 prevention services for our local school districts.**

As I review the enclosed accomplishments of our funded partner agencies and write my last annual report summary before retirement, I'm left with an overwhelming sense of gratitude. I'm grateful for the many partners who have shared passions, goals, and accomplishments. To those I've worked alongside of who reflect a two-county community of collaborative partners and agencies that care deeply about the people among us with lived experience of mental illness and substance abuse disorders.

To our community that cares enough to provide the best possible treatment to all in need of behavioral health services – thank you. It has been an honor to serve you.

**Judy Wortham Wood**

Executive Director

**TREATMENT WORKS • PEOPLE RECOVER**

# REFLECTING ON EXECUTIVE DIRECTOR JUDY WORTHAM WOOD'S 13 YEAR TENURE

Unprecedented partnerships to assure the broadest level of quality behavioral health services for Wayne & Holmes Counties.



"During my last 13 years as the Executive Director of the MHRB, I'm humbly pleased with the many partnerships that have resulted in an increase in behavioral health services, capital projects, grants and allocations, averaging over \$700,000 per year, and quality mental health and substance use disorder services by our funded partners."

## - ACCOMPLISHMENTS -

Secured over \$3 million for Capital projects, using available state dollars matched by local funded partner agency funds to increase local services:

- New recovery housing, including residential services for women with children through OneEighty
- A new shared building for NAMI Wayne/Holmes and Anazao Community Partners
- 15 permanent support housing apartments through The Counseling Center of Wayne & Holmes Counties
- New Youth Therapeutic Stabilization Center through The Village Network

Secured an additional \$2 million for approved Youth Resiliency Capital future projects with the Holmes County and Wayne County Centers for the Arts and Rittman City Schools and for the rehabilitation of Wayne Metropolitan Housing units in downtown Wooster.

Passed a 10-year levy in Wayne County and in Holmes County.

- First ever passage by a high majority in Holmes County

Successfully led through two years (2008-2010) of 31% funding cuts to help maintain services provided by funded partner agencies without interruption.

Helped agencies maintain funding and ability to provide necessary services to our community throughout the COVID-19 pandemic.



# GRATITUDE

"Judy is a social worker, by training, by experience, and as a component of her personality, her being. This has, then, brought to bear on our local system of care a genuinely client-centered focus, a real value placed on collaboration and an enduring attitude of compassion. These elements aren't easily articulated into a strategic plan or found in the minutes of a meeting. And yet, they are stitched into the fabric of our local system - a lasting mark sewn by our partner Judy."

## **Mark Woods**

Executive Director / **Anazao Community Partners**

"There is no one better in the state of Ohio at creating partnerships and bringing resources to our local community than Judy Wortham Wood. Her warmth, passion, experience, and commitment to helping individuals with mental health and substance use disorders recover will be difficult to replace. Best of luck as you shift gears Judy! It is well deserved!"

## **Bobbi Douglas**

Executive Director / **OneEighty**

"Some of the main things I appreciate about Judy are her commitment to recovery for the person's mental illness and her support of NAMI and the MOCA House Program. Her strong leadership has allowed us the opportunity to have a facility that will be our permanent organizational home. Over the years I have admired her skills at working with legislators on policy and funding issues, always committed to taking care of our local system and community. Thank you, Judy, we will miss you!"

## **Helen Walkerly**

Executive Director / **NAMI Wayne/Holmes**

"I am incredibly thankful for Judy and her work with the Mental Health and Recovery Board of Wayne & Holmes Counties. I have been blessed and humbled to work alongside Judy facilitating several Mental Health First Aid trainings for many people across our area since 2014. I was able to see first-hand the passion and dedication that Judy has with educating people and reducing the stigma concerning mental health and substance use challenges. Judy has been truly inspirational to me and I would call her not only a mentor but a friend. I will personally and professionally miss her very much."

## **Sheryl Villegas**

Executive Director / **Catholic Charities**

"Judy is a talented administrator, very knowledgeable, respectful and supportive of providers, and works diligently to orchestrate the behavioral health services in our community. When I have encountered a situation that would benefit from her assistance, she is there to listen and problem solve. She cares. It is a privilege to work with her and she will be missed."

## **Karen D. Berry, Psy.D.**

President / CEO / **The Counseling Center of Wayne and Holmes Counties**

# FUNDED PARTNERS UPDATE



- Despite the enduring stress and trauma of the ongoing pandemic, we have demonstrated perseverance, creativity under pressure, unique collaboration and continued service.
- The agency is seeing fewer consumers, however, those consumers we are serving are presenting with increased severity and intensity of need, with fewer external supports.
- The Family Liaison service was developed as a new service to support schools, youth and families in need of support, but not yet connected to services.
- The Homeless Navigator has kept over 30 families off the street and out of the elements long enough to make a connection to a provider or social service partner.
- In FY22, Anazao will focus on supporting our staff in novel ways - carving-out time for self-care and continuing innovation around staff incentives.



- Across the programs, we are seeing a consistent number of people being served. Utilizing virtual connections as well as traditional in-person sessions have resulted in a stable client base.
- 283 children were served through our Early Childhood Mental Health Consultation and only 1 child was removed from the classroom after the initiation of services.
- Participation in W.I.S.E (Wraparound Inclusion Strengthens Everyone) meetings increased when using a virtual option. We exceeded the target goal of 25 by serving 41 individuals this year.
- A highlight of this fiscal year was the addition of State Opiate Response (SOR) 2.0 funds for funding Triple P Parenting education to assist families affected by substance use.
- We served 36 youth through the Character Building Group for low level offenders that seeks to challenge the youth's perception on how they became involved with Juvenile Court.



- The MOCA House Program documented 1,959 in-person visits from 171 unique persons seeking recovery services. This was an average of 8 persons per day (the limit for 3 quarters).
- As Ohio restrictions on hospital visitors continue, our Hospital Peer Supporter provides support to any persons discharged from Heartland Behavior Healthcare by writing cards, making calls to peers, and serving as a recovery aid in the program.
- Providing transportation increased attendance from Holmes County residents as we served 27 persons in NAMI's signature 8-week Family to Family education class.
- 51 law enforcement officers graduated from the CIT (Crisis Intervention Team) training. A grant from NEOMED helped to expand our program, to offer 2 classes this year.
- The Suicide Prevention Coalition is developing a resource packet for local organizations to ensure safe messaging in the event of a death by suicide.

# FUNDED PARTNERS UPDATE



- Prevention programming took a pause but then came back with new delivery techniques and an increased commitment to our mission. We honestly believe that our approach to balancing client needs with pandemic precautions saved lives.
- Same day walk-ins are now available, increasing service delivery and admissions.
- The Quick Response Team (QRT) followed up with 86 individuals who presented at Wooster Community Hospital with an overdose and 25% of those sought treatment with OneEighty.
- Significant community collaboration led to the creation of a cold weather shelter and a "Living Room" for homeless individuals to go during the day to access services.
- We are planning to build a new Transitional Recovery Housing building next to WRTC in the near future. This would allow for an increase in transitional beds from 6 to 12.



- The Center averaged 172 admissions per month and the average monthly caseload was 4,959. Clients of all ages were impacted, through services ranging from our Early Childhood Mental Health program through a new geriatric case management service, Senior Outreach Services.
- The Emergency Services team continued to provide crisis services 24/7/365 and conducted 840 pre-hospitalization assessments, slightly up from FY20.
- Clinical staff received additional training in telehealth techniques and there was also a focus on increased training on risk assessment procedures, particularly those focused on assessing suicidality.
- Of clients seen for counseling, 85% of those presenting with severe depression showed a reduction in symptoms after treatment, as did 83% presenting with severe anxiety. Customers are reporting an overall high level of satisfaction with services provided.
- FY22 promises to be busy with a survey by CARF; preparation for OhioRISE, a new state initiative to serve youth; and, with the sponsorship of MHRB, the hopes to receive capital funding to build an eight-bed residential treatment facility and renovate a current residential facility.



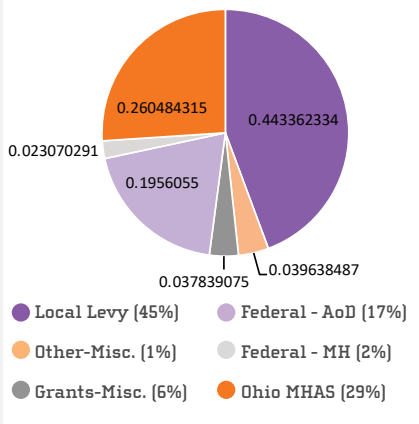
The Holmes Center for the Arts is newly completed thanks to receiving \$500K in OhioMHAS Capital Grants funding through the MHRB in FY20. With an official grand opening to come soon, they have already served over 300 students weekly through approximately 75 hours of music, art, theatre, and dance classes per week as well as an after-school program for at-risk teens. The goal is to make the new HCA building not only a home for the arts, but a place for youth to build resiliency, become connected, express themselves, learn to work as a team, gain confidence, and have consistent, caring adults active in their lives.

## COMMUNITY UPDATE

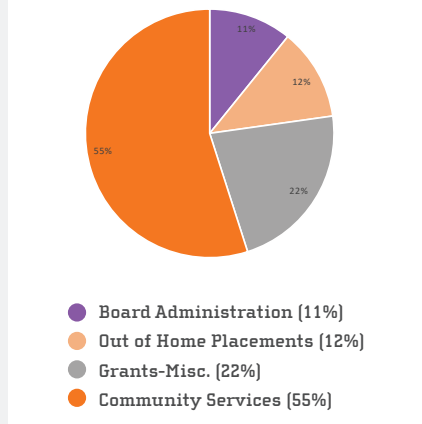


# 2021 FINANCIAL REVIEW

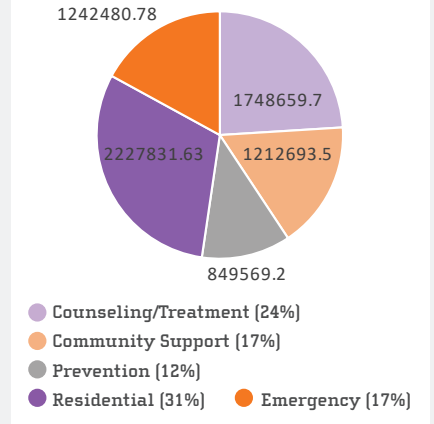
## FY21 ACTUAL MHRB REVENUE - \$8,822,571



## FY21 ACTUAL MHRB EXPENDITURES - \$8,164,093



## FY21 COMMUNITY SERVICES BREAKDOWN NON MEDICAID



# STAFF DIRECTORY

## - STAFF -

### JUDY WORTHAM WOOD

- Executive Director -

### ROSE LOVE

- Finance Director -

### SUE ZARLENGO

- Executive Assistant -

### JOANNA EDWARDS

- Associate Director -

### JESSICA ORR

- Director of Community Partnerships -

### ANNA FETZER

- Program Coordinator -

## - BOARD OF DIRECTORS -

### BRUCE ARMSTRONG

Vice-Chair\*\*

### MICHAEL D. BRUMFIELD

### ANNETTE S. CARY

Secretary\*\*

### DENNIS H. FINLEY

### CHERIE GRAHAM

### SARAH HARDER

### DAVID A. HERSHBERGER

### RHONDA LING

### MATTHEW MILLER

### ROGER MOORE

### BARBARA MYKKANEN

### MATTHEW OGDEN

### JAMES B. PYERS

TREASURER\*\*

### DR. SHELLIE RUSSELL-SKERSKI

### CRAIG SANDERS

CHAIR\*\*

### ROBIN TROYER

\*\*BOARD OFFICERS



**Treatment Works • People Recover**

